



# MONTHLY MEMBERSHIP PROGRESS REPORT

District A 9

Results as of: 5/31/2014

GMT: TERRY GRAHAM

LOCATION ONTARIO

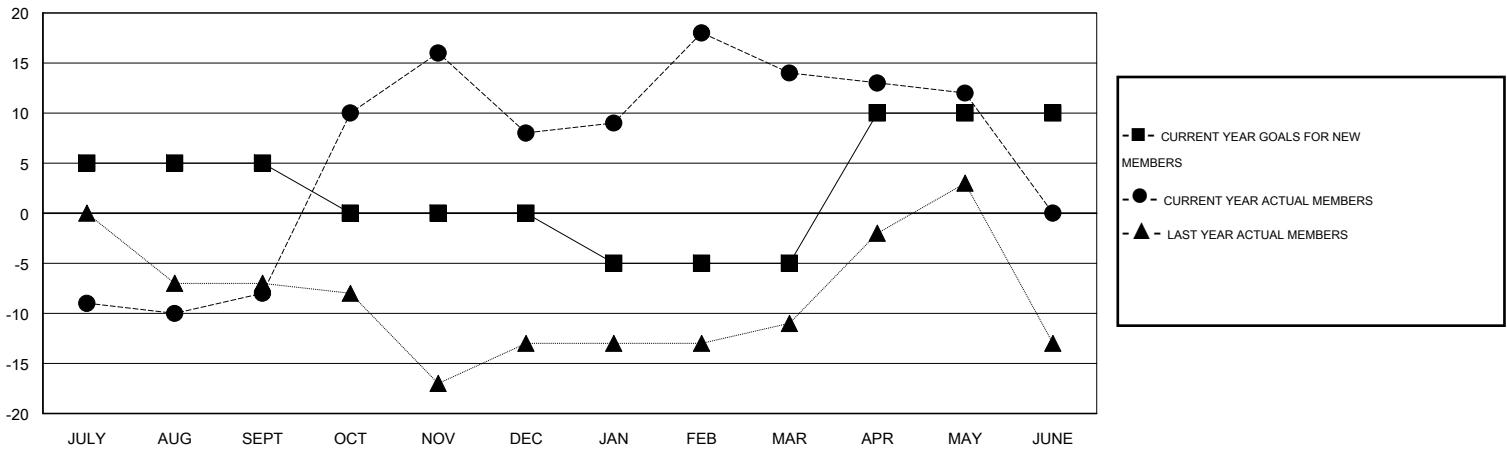
GMT CA 2

Clubs					Members				
RESULTS FOR 2013-2014					RESULTS FOR 2013-2014				
QUARTER	NEW CLUB GOAL	ACTUAL NEW CLUBS	ACTUAL DROPPED CLUBS	ACTUAL NET GAIN/LOSS	QUARTER	NEW MEMBER GOAL	ACTUAL TOTAL MEMBERS ADDED	ACTUAL DROPPED MEMBERS	ACTUAL NET GAIN/LOSS
JULY/AUG/SEPT	0	0	0	0	JULY/AUG/SEPT	5	14	22	-8
OCT/NOV/DEC	0	0	0	0	OCT/NOV/DEC	-5	54	38	16
JAN/FEB/MAR	0	0	0	0	JAN/FEB/MAR	-5	26	20	6
APR/MAY/JUNE	1	0	0	0	APR/MAY/JUNE	15	11	13	-2

GOALS AND ACTUAL NEW CLUBS CUMULATIVE



GOALS AND ACTUAL MEMBERS CUMULATIVE



DROPPED CLUBS: 0	32 CLUBS OF 47 ADDED 1 OR MORE NEW MEMBERS	<b>GENDER DISTRIBUTION</b> MALE 1,000 (76.51%) FEMALE 307 (23.49%)
<b>DROPPED MEMBERS</b> DECEASED 19 CLUB CANCELLED 0 OTHER 74 TOTAL 93	<a href="#">CLICK HERE FOR HEALTH ASSESSMENT DATA</a>	FAMILY UNIT MEMBERS 279 HEAD OF HOUSEHOLD 137 NON-HEAD OF HOUSEHOLD 142